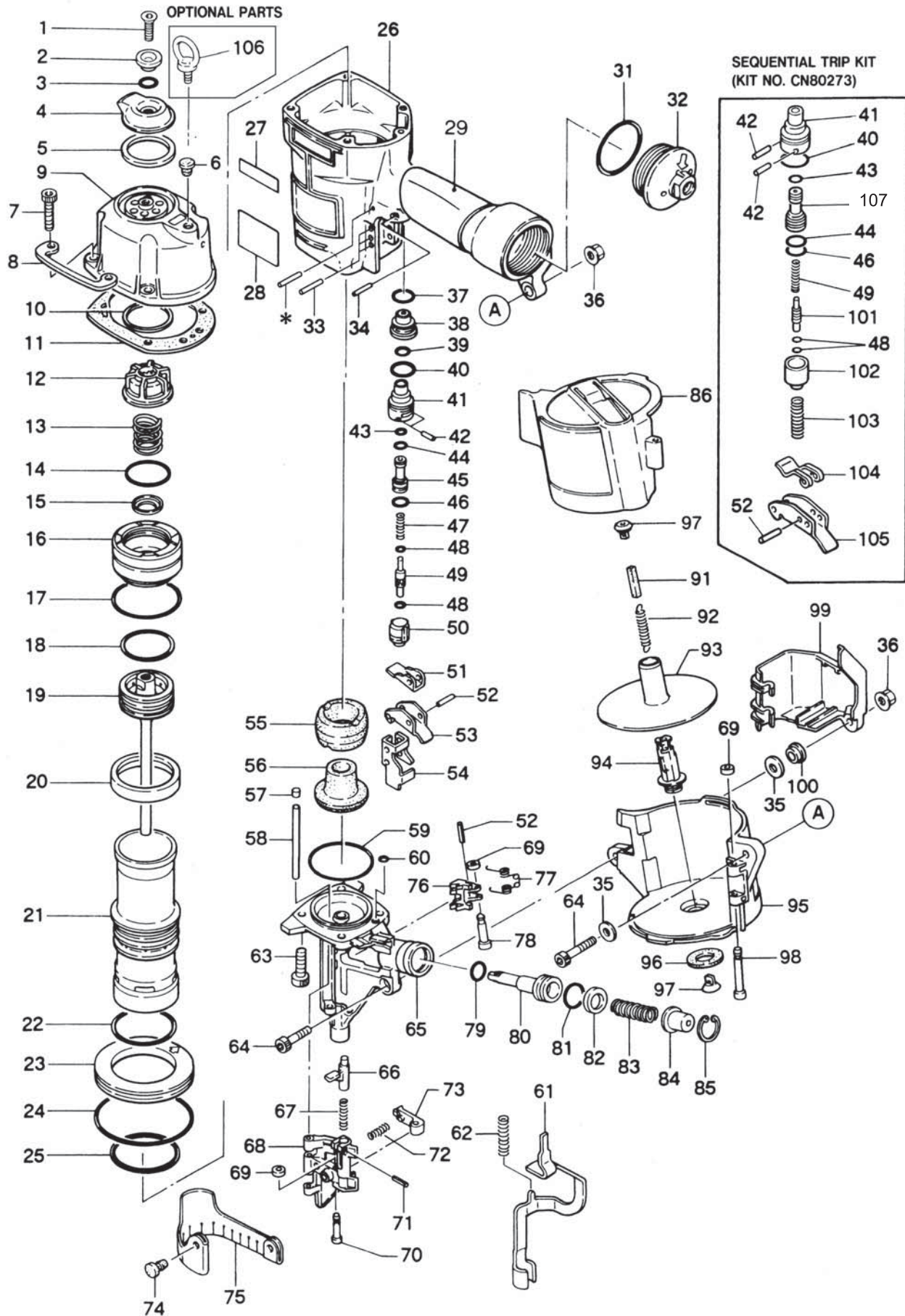


# CN80

## HEVY DUTY COIL NAILER



Tool Model	Part NO	Part Code	Description
CN80	1	AA82427	SCREW 8 X 20 (HEXAGONAL HALL)(REPLACES BB49813+CN32582)
CN80	2	CN32631	EXHAUST COVER HOLDER FOR USE W/AA82427(REP.CN32582+BB49813)
CN80	3	HH11132	O-RING 1AP10A CN65072
CN80	4	CN37675	EXHAUST COVER (CN32585 replaced)
CN80	5	CN37376	EXHAUST COVER SEAL (CN32242 replaced)
CN80	6	TA12319	GROMMET
CN80	7	BB40422	BOLT 6X30 FOR CC00402)(REPLACES BB40438+CC49408)
CN80	8	CN37550	PROTECTOR (CN35766 replaced)
CN80	9	CN81208	CYLINDER CAP UNIT (KN11165 replaced)
CN80	10	CN34458	SPACER EXHAUST
CN80	11	CN37549	CYLINDER CAP SEAL (CN34467 replaced)
CN80	12	CN37674	PISTON STOP (CN34444 replaced)
CN80	13	KK23195	SPRING 3195
CN80	14	HH19142	O-RING A 3X41.6
CN80	15	CN37547	HEAD VALVE WASHER (CN34453 replaced)
CN80	16	CN37673	HEAD VALVE PISTON (CN34460 replaced)
CN80	17	HH19195	O-RING 3X56.8 851438
CN80	18	HH19196	O-RING 1A 4.9X43 851439
CN80	19	CN81206	MAIN PISTON UNIT (CN34445 replaced)
CN80	20	CN37527	CYLINDER SEAL (CN31560 replaced)
CN80	21	CN37687	CYLINDER (KN10853 replaced)
CN80	22	HH19192	O-RING 3.1X56.5
CN80	23	CN37524	CYLINDER RING (CN31559 replaced)
CN80	24	HH12117	O-RING AG85
CN80	25	HH11169	O-RING AP56
CN80	26	CN37546	FRAME (CN34441 replaced)
CN80	27	CN34457	LABEL(CN80)
CN80	28	CN37439	WARNING LABEL (CN34879 replaced)
CN80	29	CN34703	GRIP COVER
CN80	31	HH12102	O-RING 1 AG 50
CN80	32	CN81221	END CAP ASSY (CN34455 replaced)
CN80	33	FF21221	ROLL PIN 3X25
CN80	34	FF21229	W.S.PIN 3X20
CN80	35	EE39138	WASHER 138
CN80	36	CC00402	NUT M6
CN80	37	HH11159	O-RING ARP568-016 86459
CN80	38	CN37529	TRIGGER VALVE GAGE (CN31661 replaced)
CN80	39	HH11151	O-RING ARP568-013 N10067
CN80	40	HH11138	O-RING AP20
CN80	41	CN32247	TRIGGER VALVE HOUSING(REPLACES CN/KN10387)
CN80	42	FF30161	PIN 161
CN80	43	HH11119	O-RING AP6 N10027
CN80	44	HH11209	O-RING 1BP7 N10028
CN80	45	CN31589	PILOT VALVE
CN80	46	HH11113	O-RING AP9 N5528
CN80	47	KK24123	COMPRESSION SPRING 4123
CN80	48	HH11901	O-RING 1.4 X 2.5 CN65020
CN80	49	CN31347	TRIGGER VALVE STEM
CN80	50	CN31346	TRIGGER VALVE CAP
CN80	51	CN37424	CONTACT LEVER (TA10506 replaced)
CN80	52	FF21220	PIN 3X16 N10098
CN80	53	CN37423	TRIGGER
CN80	54	CN37553	CONTACT ARM GUIDE
CN80	55	CN31563	BUMPER A
CN80	56	CN31564	BUMPER B
CN80	57	CN31594	PIN HOLDER
CN80	58	FF31127	PIN 1127
CN80	59	HH19139	O-RING A 1.5X53.5

Tool Model	Part NO	Part Code	Description
CN80	60	HH19125	O-RING A1.6X4.2 CN65064
CN80	61	CN38318	CONTACT ARM, REPLACES CN35831
CN80	62	KK23223	SPRING 3223
CN80	63	BB40444	M8 X 30 HSHC SCREW
CN80	64	BB40469	BOLT 6X40
CN80	65	CN37671	NOSE (CN34459 replaced)
CN80	66	CN37371	DOOR LATCH (CN30587 replaced)
CN80	67	KK23123	SPRING 3123 CN65054
CN80	68	CN37672	DOOR (CN34450 replaced)
CN80	69	EE39602	WASHER 7 CN65059 N10056(FORMER EE39601/EE396
CN80	70	FF41286	PIN 1286
CN80	71	FF21234	W.S. PIN 3 X 12 CN65055
CN80	72	KK23109	SPRING 3109 CN65057
CN80	73	CN37523	CHECK PAWL (CN30584 replaced)
CN80	74	CN31083	HOOK DUST COVER
CN80	75	CN34456	DUST COVER
CN80	76	CN34448	FEED PAWL
CN80	77	KK33058	SPRING 3058
CN80	78	FF41263	PIN 1263
CN80	79	HH11124	O-RING AP10 T29045(FORMER HH90124 & TA1
CN80	80	CN37678	FEED PISTON (CN34449 replaced)
CN80	81	HH11143	O-RING AP21 851437
CN80	82	CN37528	FEED PISTON STOP (CN31570 replaced)
CN80	83	KK23225	SPRING 3225
CN80	84	CN37538	SPRING COLOR (CN31571 replaced)
CN80	85	JJ22407	C-RING 26
CN80	86	CN37684	MAGAZINE COVER (CN35832 replaced)
CN80	91	CN30601	SPACER CN65091
CN80	92	KK13144	SPRING 3144 (SUPERCEDES KK13040)
CN80	93	CN35833	NAIL SUPPORT
CN80	94	CN37382	MAGAZINE POST (CN34407 replaced)
CN80	95	CN37682	MAGAZINE (CN34469 replaced)
CN80	96	EE39603	RUBBER WASHER 14(REPLACES EE39606)
CN80	97	CN37383	RECEIVER,SPRING (CN30602 replaced)
CN80	98	FF41287	PIN 1287
CN80	99	CN37535	CONTACT ARM COVER (CN31566 replaced)
CN80	100	CN32170	COLLAR
CN80	101	CN31715	TRIGGER VALVE STEM CN-670DS
CN80	102	CN31716	TRIGGER VALVE CAP CN-670DS
CN80	103	KK23228	SPRING 3228
CN80	104	CN34300	CONTACT LEVER DS
CN80	105	CN30276	TRIGGER (S.T.)
CN80	106	BB10401	EYE BOLT 8X15
CN80	107	CN33627	PILOT VALVE
CN80	108	CN80611	O-RING KIT FOR CN70/80/SN90
CN80	109	CN80548	TRIGGER VALVE KIT(SN90A)
CN80	111	FF21611	ROLL PIN 3X32 AW