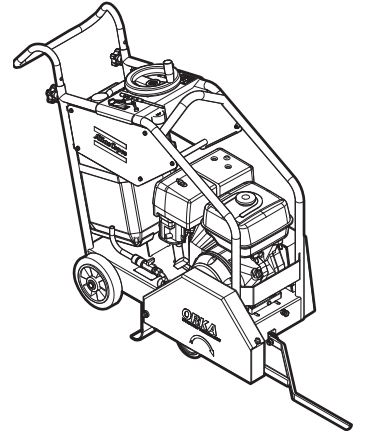


## Spare parts list

### Cutters





# Contents

<b>General information</b> .....	5
<b>Spare parts list</b> .....	6
<b>Upper frame, Honda</b> .....	6
<b>Upper frame, Lombardini</b> .....	10
<b>Engine and power transmission, Honda</b> .....	14
<b>Engine and power transmission, Lombardini</b> .....	16
<b>Lower frame</b> .....	18
<b>Accessories</b> .....	20
<b>Discs</b> .....	20
<b>Kits</b> .....	21
<b>Service kits</b> .....	21
<b>Adaptation kit, Lombardini</b> .....	21



## General information

This spare parts list applies to the following:

Part number	Description
4812 0510 07	Cutter ORKA 350, 450 Honda petrol
4812 0510 08	Cutter ORKA 350, 450 Lombardini diesel
4812 0510 09	Cutter ORKA 350, 450 Without petrol engine

Use only authorized parts. Any damage or malfunction caused by the use of unauthorized parts is not covered by Warranty or Product Liability. Any unauthorized use or copying of the contents or any part thereof is prohibited. This applies in particular to trademarks, model denominations, part numbers, and drawings.

### Instructions for use

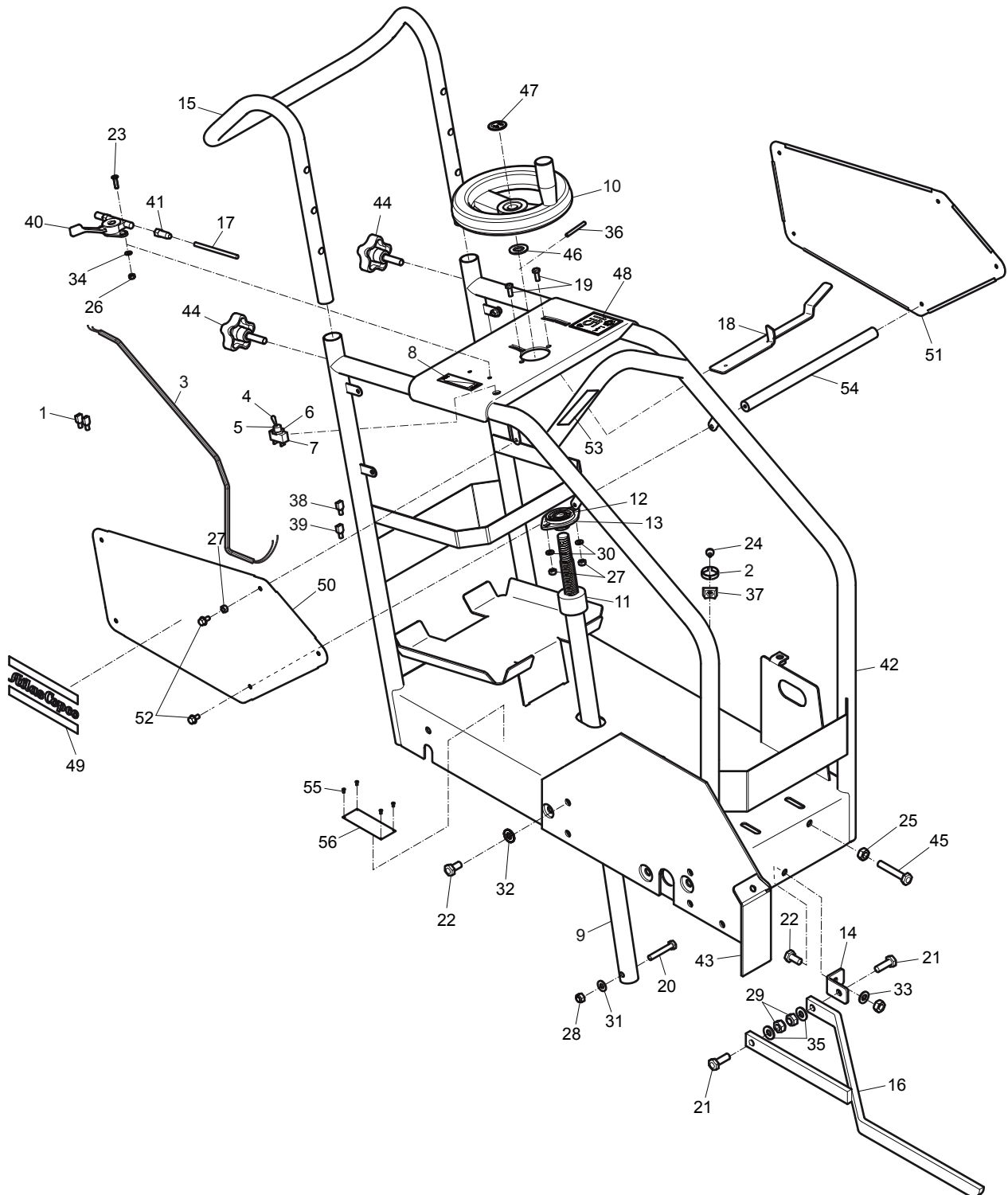
This spare parts list contains no safety regulations and is merely intended to assist in the ordering of spare parts.

For information about operating, servicing, or repairing, the relevant Safety and operating instructions must be consulted at all costs.

Please observe the safety instructions listed in the relevant Safety and operating instructions!

# Spare parts list

## Upper frame, Honda



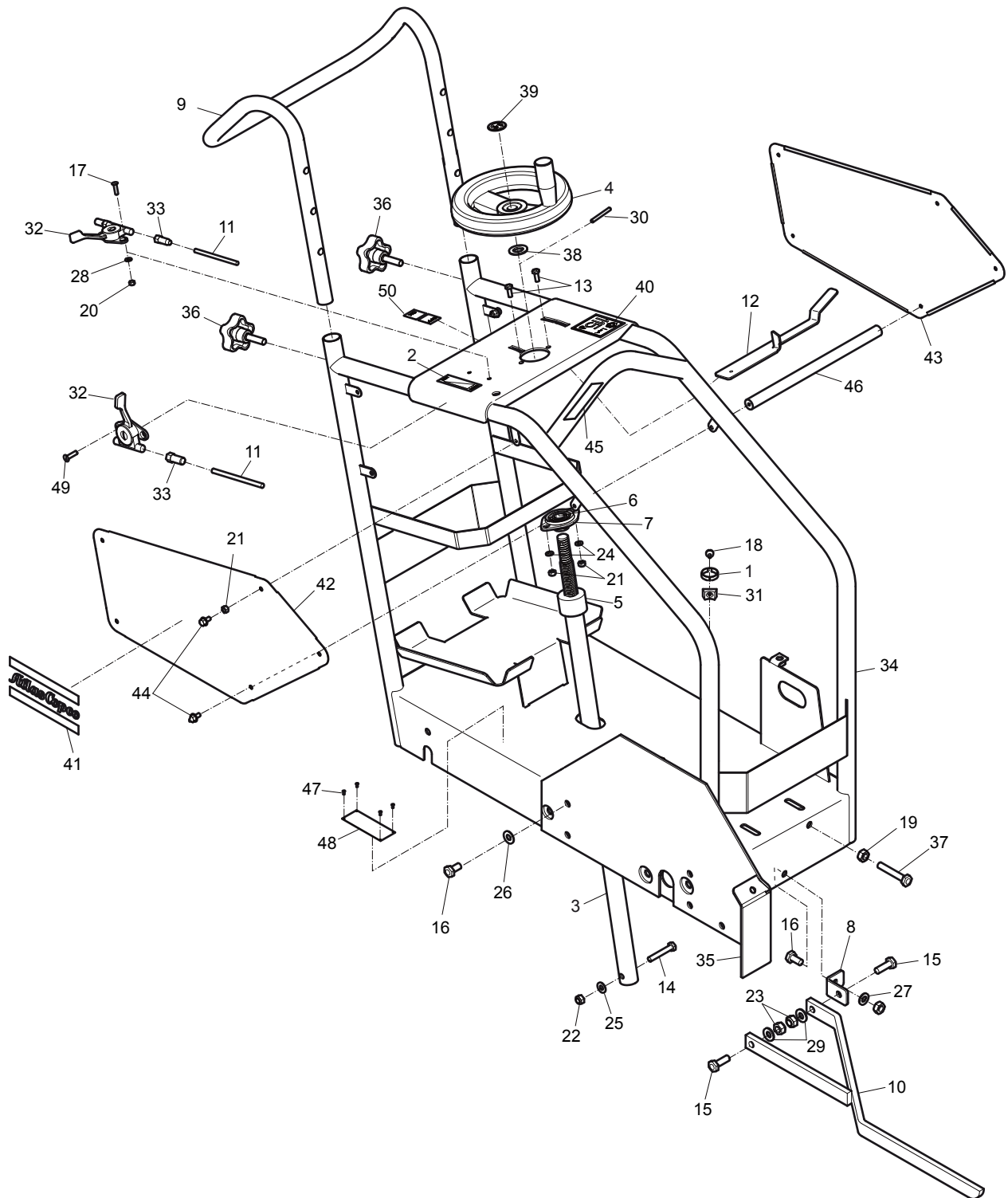
No.	Description	Remark	Quantity	Part number
1	Terminal		2	4700 1856 45
2	Clamp	Lg186 x 4.7 mm	5	4700 3130 41
3	Electric cable	1.35 m 4.43 ft	1	4700 3641 19
4	Switch		1	4700 3647 63
5	Membrane		1	4700 3647 65
6	Washer		1	4700 3647 66
7	ON/OFF Plate		1	4700 3655 38
8	Label	"Power"	1	4700 3683 12
9	Adjusting bar		1	4812 0510 14
10	Handle		1	4700 3688 58
11	Screw		1	4700 3688 60
12	Bearing		1	4700 3688 61
13	Bearing	End stop	1	4700 1379 24
14	Angle bar		1	4812 0510 17
15	Handle		1	4700 3688 66
16	Guide		1	4812 0510 18
17	Throttle cable		1	4700 3688 71
18	Lever		1	4700 3688 76
19	Screw	M6 x 16 mm CL10.9 DIN933	2	4700 5000 13
20	Screw	M8 x 50 mm DIN933	1	-
21	Screw	M10 x 30 mm DIN933	3	-
22	Screw	M10 x 20 mm DIN933	5	-
23	Screw	M5 x 20 mm DIN963A	2	-
24	Screw	4.2 x 16 mm 0.17 x 0.63 in. DIN7981C	5	-
25	Nut	M10 DIN934	3	-
26	Nut	M5 DIN985	2	-
27	Nut	M6 DIN985	10	-
28	Nut	M8 DIN985	1	-
29	Nut	M10 DIN985	4	-
30	Washer	6.4 x 12 x 1.6 mm 0.25 x 0.47 x 0.06 in. ISO7089	4	-
31	Washer	8.4 x 16 x 1.6 mm 0.33 x 0.63 x 0.06 in. ISO7089	1	-
32	Washer	10.5 x 22 x 2.0 mm 0.41 x 0.87 x 0.08 in. NFE25-513	6	-
33	Washer	10.5 x 20 x 2.0 mm 0.41 x 0.79 x 0.08 in. ISO7089	2	-
34	Washer	M5 DIN6796	2	-
35	Washer	M10 DIN6796	4	-
36	Pin	Ø5 x 50 mm Ø0.20 x 1.97 in. ISO8752	1	-
37	Cable tie holder		5	4700 9216 93
38	Terminal		1	4700 9600 66
39	Terminal		1	4700 9600 69
40	Throttle lever		1	4700 3684 34
41	Nipple		1	4700 3684 33
42	Frame		1	4812 0510 11
43	Cover holder		1	4812 0510 20
44	Handle		2	4812 0512 91
45	Screw	M10 x 60 mm DIN933	1	-
46	Washer	17 x 32 x 3 mm 0.67 x 1.26 x 0.12 in. NFE25-513	2	-
47	Label	"Cutting depth"	1	4700 3689 28

No.	Description	Remark	Quantity	Part number
48	Label	"Noise level"	1	4700 3692 28
49	Product label	"Atlas Copco"	2	4812 0510 25
50	Plastron	Right	1	4812 0510 22
51	Plastron	Left	1	4812 0510 23
52	Screw	M6 x 12 mm DIN6921	10	-
53	Label		1	4700 3689 29
54	Round		1	4812 0512 87
55	Rivet		1	4700 1859 96
56	Data plate		1	-





# Upper frame, Lombardini

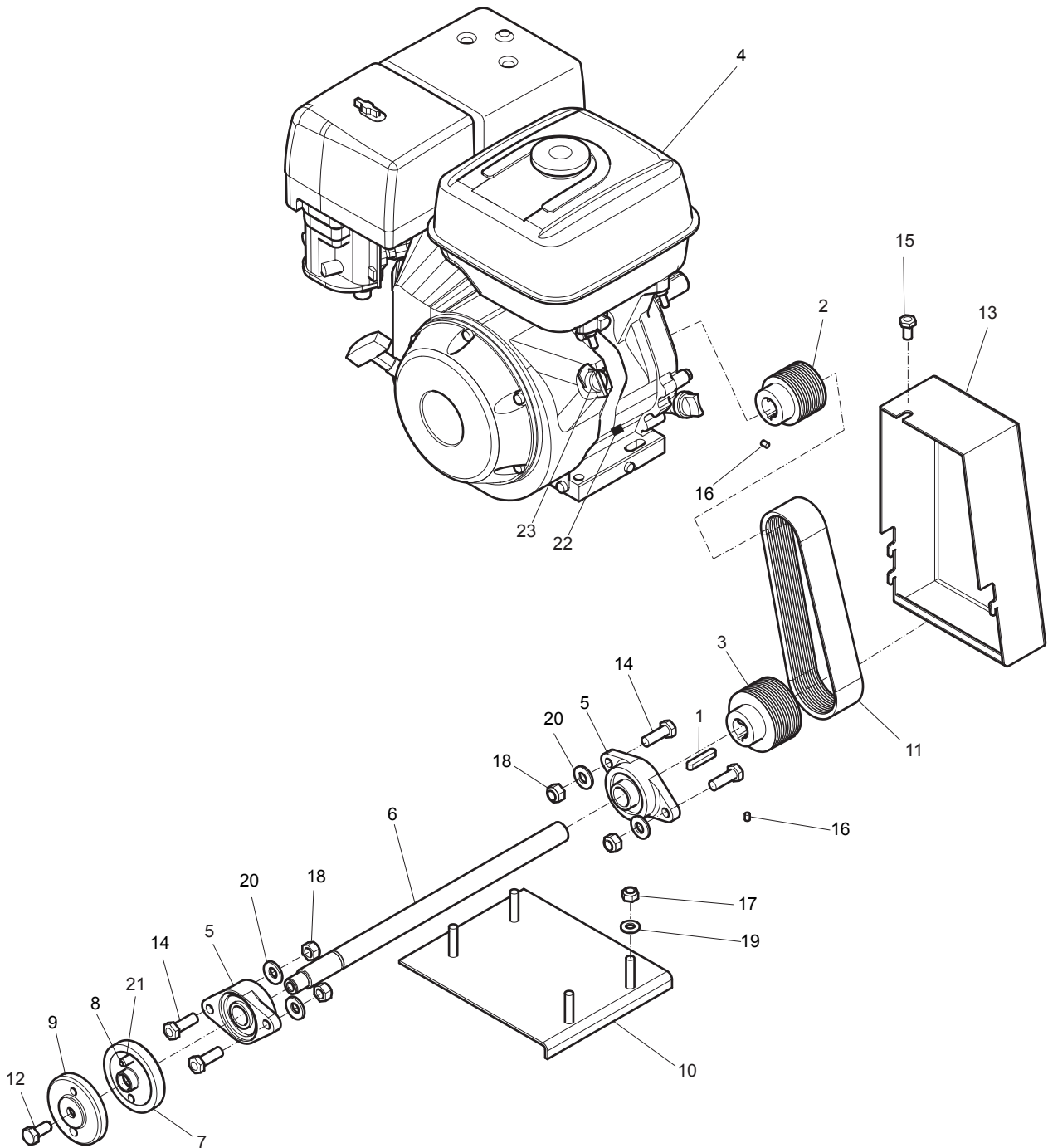


No.	Description	Remark	Quantity	Part number
1	Clamp	Lg186 x 4.7 mm	5	4700 3130 41
2	Label	"Power"	1	4700 3683 12
3	Adjusting bar		1	4812 0510 14
4	Handle		1	4700 3688 58
5	Screw		1	4700 3688 60
6	Bearing		1	4700 3688 61
7	Bearing	End stop	1	4700 1379 24
8	Angle bar		1	4812 0510 17
9	Handle		1	4700 3688 66
10	Guide		1	4812 0510 18
11	Throttle cable		2	4700 3681 03
12	Lever		1	4700 3688 76
13	Screw	M6 x 16 mm CL10.9 DIN933	2	4700 5000 13
14	Screw	M8 x 50 mm DIN933	1	-
15	Screw	M10 x 30 mm DIN933	3	-
16	Screw	M10 x 20 mm DIN933	5	-
17	Screw	M5 x 20 mm DIN963A	2	-
18	Screw	4.2 x 16 mm 0.17 x 0.63 in. DIN7981C	5	-
19	Nut	M10 DIN934	3	-
20	Nut	M5 DIN985	2	-
21	Nut	M6 DIN985	10	-
22	Nut	M8 DIN985	1	-
23	Nut	M10 DIN985	4	-
24	Washer	6,4 x 12 x 1.6 mm 0.25 x 0.47 x 0.06 in. ISO7089	4	-
25	Washer	8,4 x 16 x 1.6 mm 0.33 x 0.63 x 0.06 in. ISO7089	1	-
26	Washer	10.5 x 22 x 2.0 mm 0.41 x 0.87 x 0.08 in. NFE25-513	6	-
27	Washer	10.5 x 20 x 2.0 mm 0.41 x 0.79 x 0.08 in. ISO7089	2	-
28	Washer	M5 DIN6796	4	-
29	Washer	M10 DIN6796	2	-
30	Pin	Ø5 x 50 mm Ø0.20 x 1.97 in. ISO8752	1	-
31	Cable tie holder		5	4700 9216 93
32	Throttle lever		2	4700 3684 34
33	Nipple		2	4700 3684 33
34	Frame		1	4812 0510 27
35	Cover holder		1	4812 0510 20
36	Handle		2	4812 0512 91
37	Screw	M10 x 80 mm DIN933	1	0147 1958 77
38	Washer	17 x 32 x 3 mm 0.67 x 1.26 x 0.12 in. NFE25-513	2	-
39	Label	"Cutting depth"	1	4700 3689 28
40	Label	"Nosie level"	1	4812 0507 55
41	Product label	"Atlas Copco"	2	4812 0510 25
42	Plastron	Right	1	4812 0510 22
43	Plastron	Left	1	4812 0510 23
44	Screw	M10 x 60 mm DIN933	10	-
45	Label		1	4700 3689 29
46	Round		1	4812 0512 87
47	Rivet		1	4700 1859 96
48	Data plate		1	-

No.	Description	Remark	Quantity	Part number
49	Screw	M5 x 40 mm DIN963A	2	4700 3686 95
50	Label	"On - Off"	1	4812 0503 25

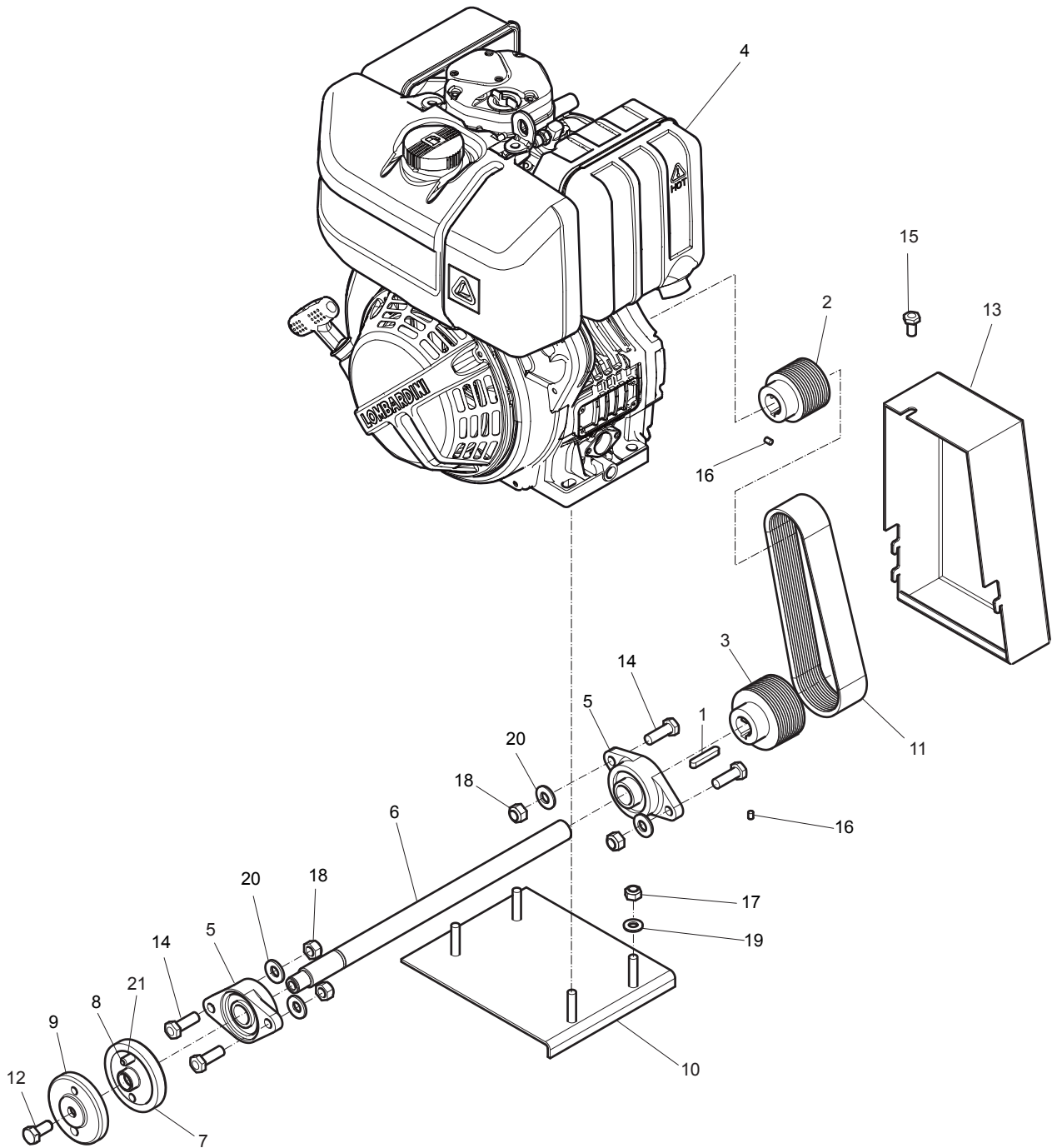


# Engine and power transmission, Honda



No.	Description	Remark	Quantity	Part number
1	Key	8 x 7 x 45 mm 0.31 x 0.28 x 1.77 in. DIN6885A	1	4700 3500 35
2	Pulley	Motor shaft	1	4700 3688 18
3	Pulley	Blade shaft	1	4700 3688 19
4	Engine	Honda GX390 UT1 QWA4 SD	1	4700 3688 45
5	Bearing		2	4700 3688 46
6	Blade shaft		1	4700 3688 47
7	Blade holder		1	4700 3688 48
8	Pin	Ø10 x 30 mm 0.39 x 1.18 in. ISO8752	1	4700 3688 49
9	Flange		1	4700 3688 50
10	Tensioning plate		1	4812 0510 13
11	Belt	Poly V12 PK611	1	4700 3688 62
12	Screw		1	4700 3688 65
13	Pulley cover		1	4812 0510 19
14	Screw	M12 x 35 mm DIN933	4	-
15	Screw	M10 x 20 mm DIN6921	1	-
16	Screw	M6 x 8 mm DIN916	4	-
17	Nut	M10 DIN985	4	-
18	Nut	M12 DIN985	4	-
19	Washer	M10 DIN6796	4	-
20	Washer	M12 DIN6796	4	-
21	Pin	Ø6 x 30 mm Ø0.24 x 1.18 in. ISO8752	1	4700 6290 24
22	Oil alert unit		1	4812 0505 35
23	Stop switch		1	4700 1172 52

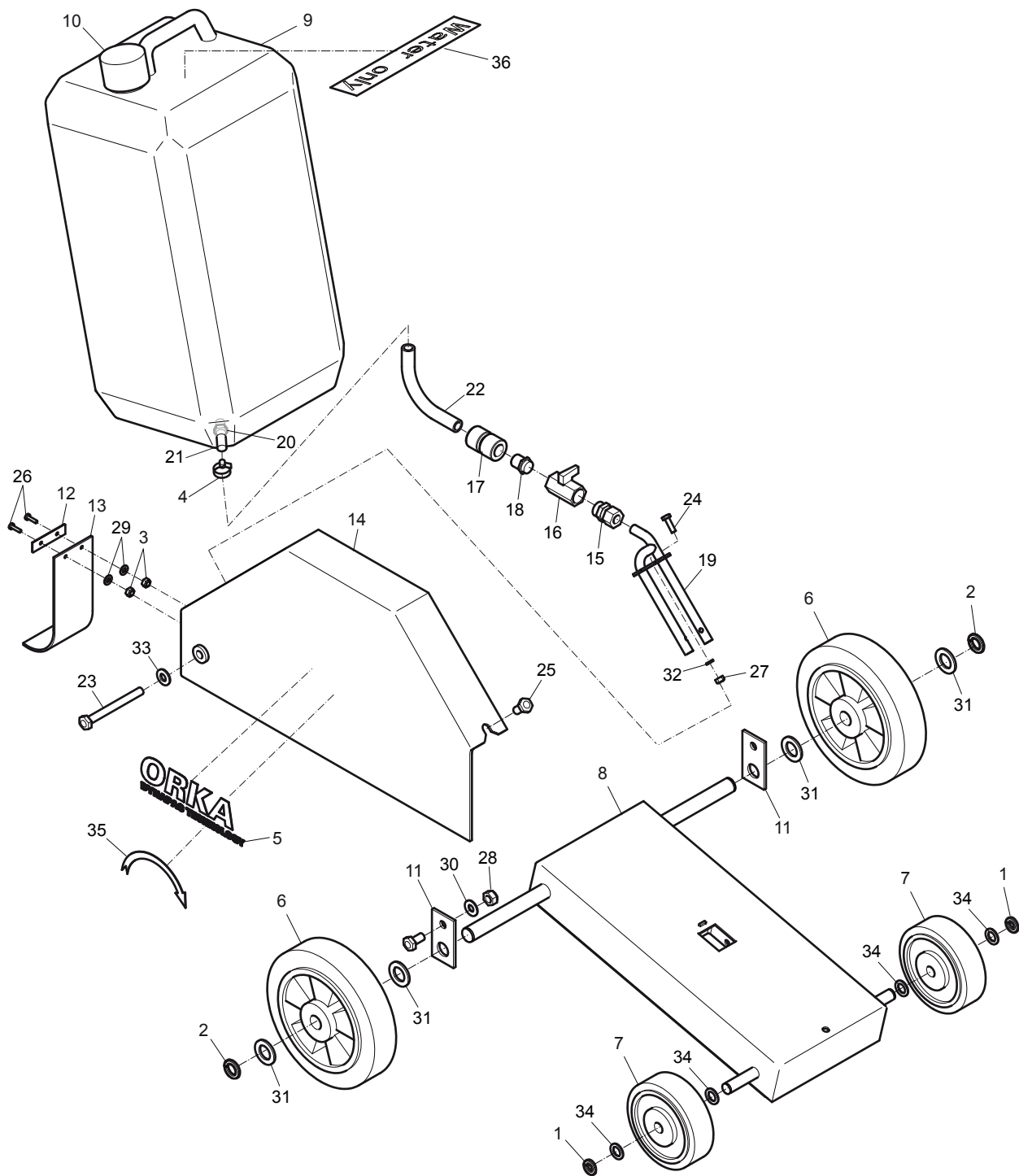
# Engine and power transmission, Lombardini





No.	Description	Remark	Quantity	Part number
1	Key	8 x 7 x 45 mm 0.32 x 0.28 x 1.77 in. DIN6885A	1	4700 3500 35
2	Pulley	Motor shaft	1	4700 3688 18
3	Pulley	Blade shaft	1	4700 3688 19
4	Engine	Lombardini 15LD350	1	4700 3696 74
5	Bearing		2	4700 3688 46
6	Blade shaft		1	4700 3688 47
7	Blade holder		1	4700 3688 48
8	Pin	Ø10 x 30 mm 0.39 x 1.18 in. ISO8752	1	4700 3688 49
9	Flange		1	4700 3688 50
10	Tensioning plate		1	4812 0510 28
11	Belt	Poly V12 PK673	1	4700 3696 77
12	Screw		1	4700 3688 65
13	Pulley cover		1	4812 0510 29
14	Screw	M12 x 35 mm DIN933	4	-
15	Screw	M10 x 20 mm DIN6921	1	-
16	Screw	M6 x 8 mm DIN916	4	-
17	Nut	M10 DIN985	4	-
18	Nut	M12 DIN985	4	-
19	Washer	M10 DIN6796	4	-
20	Washer	M12 DIN6796	4	-
21	Pin	Ø6 x 30 mm Ø0.24 x 1.18 in. ISO8752	1	-

# Lower frame



No.	Description	Remark	Quantity	Part number
1	Retaining ring		2	4700 1833 38
2	Retaining ring		2	4700 1833 39
3	Nut	M4 DIN985	2	4700 1835 57
4	Clamp		1	4700 8140 71
5	Label	"ORKA"	1	4812 0510 26
6	Wheel		2	4700 3688 34
7	Wheel		2	4700 3688 35
8	Frame		1	4812 0510 12
9	Water tank	30 litre 7.90 gallon	1	4700 3688 51
10	Tank plug		1	4700 3688 52
11	Flat bar		2	4812 0510 16
12	Flat bar		1	4700 3688 67
13	Rubber guard		1	4700 3688 68
14	Blade guard		1	4812 0510 15
15	Coupling		1	4700 3689 15
16	Water cock		1	4700 3689 16
17	Water coupling		1	4700 3689 17
18	Nipple		1	4700 3689 18
19	Fork		1	4700 3689 26
20	Nut	3/8 in.	1	-
21	Nipple		1	4700 1172 81
22	Hose		1	4700 3689 35
23	Screw	M10 x 100 mm DIN931	1	-
24	Screw	M6 x 20 mm CL10.9 DIN933	1	-
25	Screw	M10 x 20 mm DIN6921	1	-
26	Screw	M4 x 16 mm DIN84A	2	-
27	Nut	M6 DIN985	1	-
28	Nut	M10 DIN985	1	-
29	Washer	M4	2	-
30	Washer	10.5 x 22 x 2.0 mm 0.41 x 0.87 x 0.08 in. NFE25-513	1	-
31	Washer	21 x 37 x 3.0 mm 0.83 x 1.46 x 0.12 in. ISO7089	4	-
32	Washer	6.5 x 10.4 x 2.0 mm 0.26 x 0.41 x 0.08 in. NFE25-515	1	-
33	Washer	M10 DIN6796	1	-
34	Washer	15 x 28 x 2.5 mm 0.59 x 1.10 x 0.10 in. ISO7089	4	-
35	Label	"Arrow"	1	4812 0503 26
36	Label	"Water only"	1	4700 3694 24

# Accessories

## Discs

Description	Remark	Quantity	Part number
350F	Suitable for fresh concrete (24-72 hours). Cutting depth: up to 120 mm (4.72 in.)	5	4700 3685 94
350C	Suitable for old concrete (full strength). Cutting depth: up to 120 mm (4.72 in.)	5	4700 3685 93
350A	Suitable for asphalt. Cutting depth: up to 120 mm (4.72 in.)	5	4700 3685 92
450F	Suitable for fresh concrete (24-72 hours). Cutting depth: up to 170 mm (6.69 in.)	1	4700 3685 95
450C	Suitable for old concrete (full strength). Cutting depth: up to 170 mm (6.69 in.)	1	4700 3685 87
450A	Suitable for asphalt. Cutting depth: up to 170 mm (6.69 in.)	1	4700 3685 88

# Kits

## Service kits

### One year service kit, Honda

Part number 3382 1000 86

Description	Remark	Quantity	Part number
Air filter		1	4700 3667 78
Fuel filter		1	4700 3671 24
Spark plug		1	4700 3612 42
Air filter cover		1	4700 1171 24
Starter rope		1	3382 1001 02
Gasket		1	3382 1001 01

### One year service kit, Lombardini

Part number 3382 1000 87

Description	Remark	Quantity	Part number
Air filter		1	4700 3699 76
Oil filter		1	4700 3699 82
Fuel filter		1	4700 3699 90

## Adaptation kit, Lombardini

Description	Remark	Quantity	Part number
<b>Adaptation kit</b>		1	4812 0502 29
Holder		1	4812 0502 30
Stop		1	4812 0502 31
Clamp		5	4700 1865 80
Label		1	4700 3683 12
Throttle cable		1	4700 1172 82
Screw		2	4700 5350 08
Cable tie holder		5	4700 9216 93
Throttle lever		1	D604 0017 39
Nipple		1	D604 0027 30
Nut		2	4700 5860 01
Washer		2	4700 6150 41
Cable stop		1	4812 0502 32
Screw		5	4700 5415 39







Any unauthorized use or copying of the contents or any part thereof is prohibited.  
This applies in particular to trademarks, model denominations, part numbers, and  
drawings.

© 2012 Atlas Copco Construction Tools AB | No. 9800 1204 01a | 2012-11-26

[www.atlascopco.com](http://www.atlascopco.com)