

**Tool model:** RN46K-1-E  
**Tool Status:** active

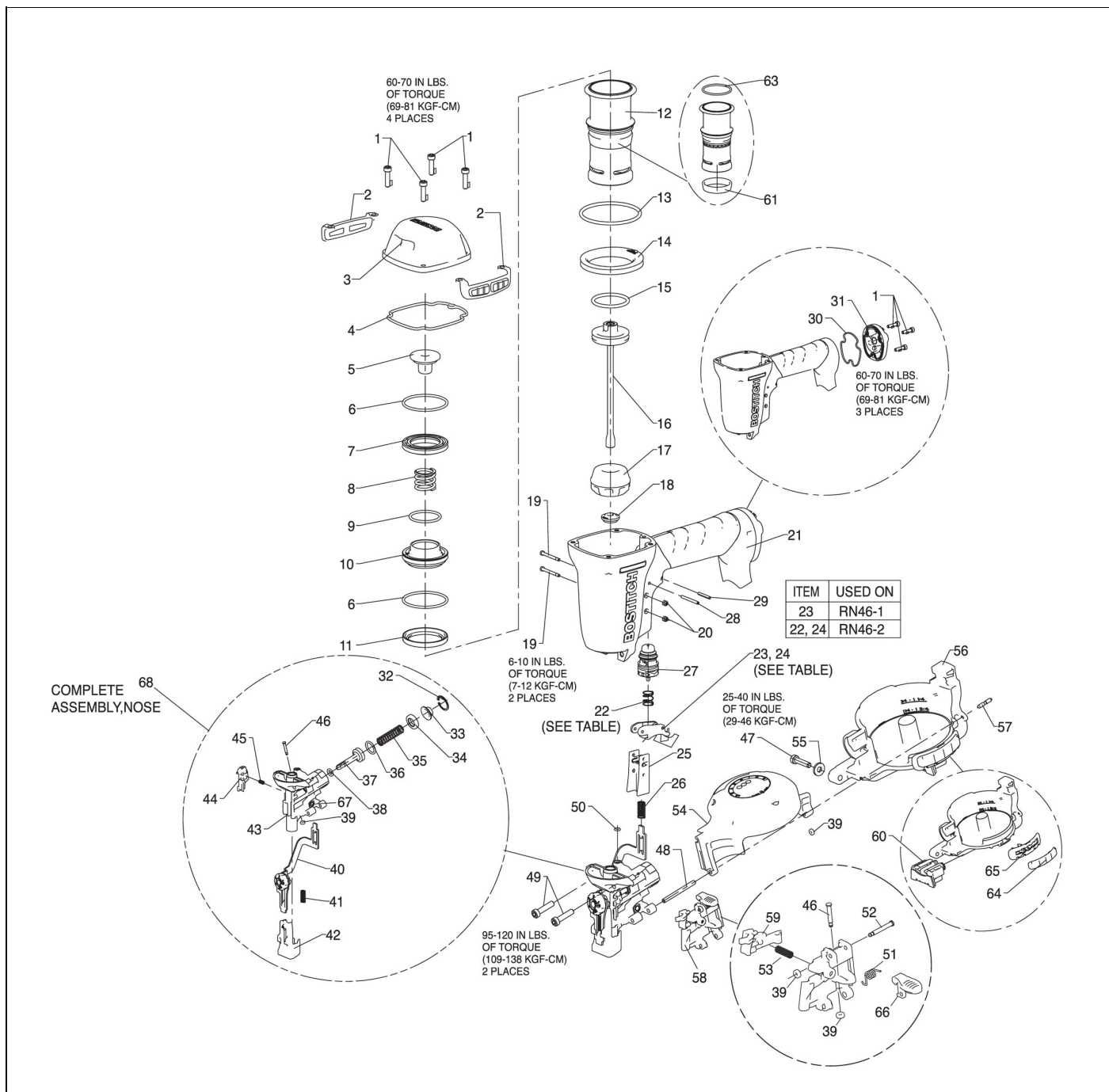


Chart Ref	Spare part code	Description	Status	Previous Part Code 1	Previous Part Code 2
1	MSC5080-20	SCREW,SOC HD. CAP M5 X 20	fut disc		
2	149845	ASSEMBLY,WEAR PLATE	active		
3	149808	CAP,MACHINING	active		
4	149832	SEAL,FRAME/CAP	active		
5	149838	BUMPER,HEAD VALVE	active		
6	149828	O-RING,1.925X.103 XNBR	active		
7	149836	UPPER BODY,HEAD VALVE	active		
8	149806	SPRING,HEAD VALVE	active		
9	149842	O-RING,1.299X.103 XNBR	active		
10	149839	LOWER BODY,HEAD VALVE	active		
11	149840	SEAL,SLEEVE	active		
12	149941	ASSEMBLY,SLEEVE	active		
13	850766	O-RING,2.609X.139	active		
14	149814	RING,SLEEVE	active		

15	850607	O-RING,1.484X.139	active
16	149826	ASSEMBLY,PISTON/DRIVER	active
17	149803	BUMPER	active
18	149820	GUIDE,DRIVER	active
19	105811	SCREW,TRIGGER PIVOT	active
20	MHE3050-100	NUT,NYLON M3X.50	active
21	149830	ASSEMBLY,FRAME	active
22	100387	SPRING,COMPRESSION	active
23	107581	ASSEMBLY,C.T.TRIGGER	active
24	107582	ASSEMBLY,S.T.TRIGGER	active
25	107522	GUIDE,TRIP	active
26	149871	SPRING,CONTACT ARM	active
27	TVA6	KIT,TRIGGER VALVE	active
28	100298	PIN,SPIRAL M3X30	active
29	MPP030020	PIN,SPIRAL M3X20MM	active
30	149816	SEAL,END CAP	active
31	149817	CAP,END	active
32	149854	RETAINING RING,INCH	active
33	149853	COLLAR,SPRING	active
34	149855	STOP,FEED PISTON	active
35	149887	SPRING,FEED PISTON	active
36	88998	O-RING,.674X.103	active
37	149852	FEED,PISTON	active
38	149883	O-RING,.299X.103 NBR	active
39	N12112	HINGE PIN RETAINER	active
40	149899	ASSEMBLY,TRIP	active
41	149874	SPRING,DEPTH ADJUST CAM	active
42	149900	ASSEMBLY,CONTACT ARM FOOT	active
43	160141	NOSE	active
44	149897	PAWL,FEED	active
45	149859	SPRING,FEED PAWL	active
46	149882	PIN,CHECK PAWL	active
47	MSC6100-25	SCREW,SHCS,M6X1.00X25	active
48	149905	PIN,DOOR/COVER	active
49	MSC6100-30	SCREW,SHCS,M6X1.00X30	active
50	149885	O-RING,.145X.070 CP	active
51	149831	SPRING,TORSION DOOR LATCH	active
52	149886	PIN,DOOR LATCH	active
53	149898	SPRING,CHECK PAWL	active
54	149943	ASSEMBLY,COVER/CANISTER	active
55	MPW6.2	WASHER.SPECIAL	active
56	149939	ASSEMBLY,CANISTER	active
57	149907	PIN,COVER/CANISTER	active
58	160144	ASSEMBLY,DOOR	active
59	160142	PAWL,CHECK	active
60	149940	ASSEMBLY,SHINGLE GUIDE	active
61	149812	SEAL,CHECK	active
62	RN46-RK	REBUILD KIT,RN46	active
63	149829	O-RING,1.862X.103 NBR	active
64	149866	WEAR PAD,CANISTER	active
65	161236	GUARD,CANISTER	active
66	149861	LATCH	active

5.4.2014

rn46k-1-e

---

67	MHE6100-100	NUT,ESN M6X1	active
68	160143	ASSEMBLY,NOSE	active

---