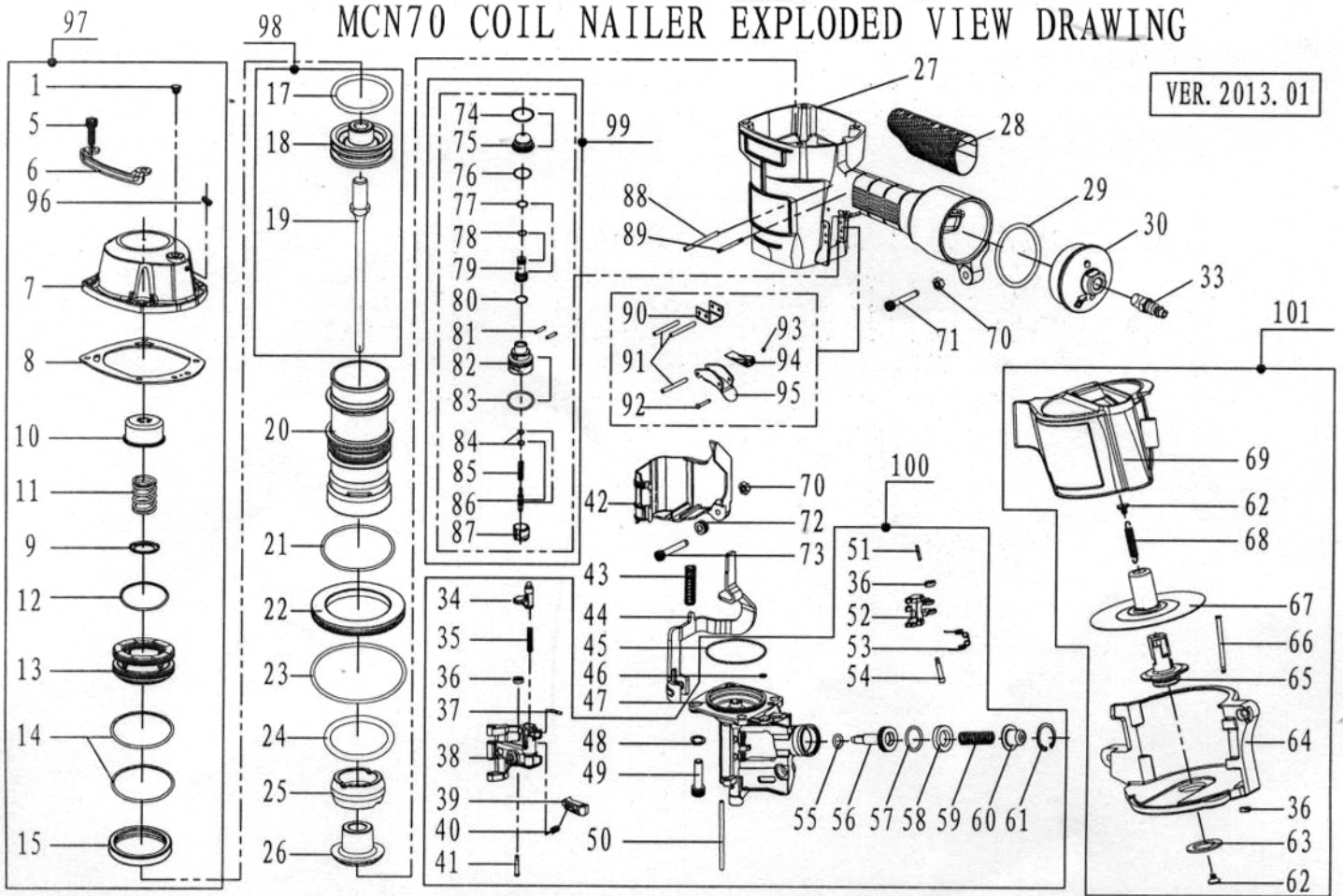


# MCN70 COIL NAILER EXPLODED VIEW DRAWING

VER. 2013. 01



## PARTS LIST FOR COIL NAILER MODEL: MCN70

No.	Description	Number	Qty	No.	Description	Number	Qty	No.	Description	Number	Qty
1	Grommet	MCN70-100-09	1	39	Check Pawl	CN70-310-05	1	71	Screw M6X35	/	1
5	Screw M6X30	/	4	40	Compression Spring	CN55-310-24	1	72	Collar	CN55-310-26	1
6	Protector	MCN70-200-12	2	41	Step Pin	CN70-310-17	1	73	Screw M6X38	/	1
7	Cylinder Cap Unit	MCN70-100-01	1	42	Contact Arm Cover	CN70-340-03	1	74	O-Ring 15.2X1.9	/	1
8	Cylinder Cap Seal	MCN70-100-07	1	43	Compressing Spring	CN70-340-02	1	75	Spacer	CN55-220-06	1
9	Head Valve Washer	MCN70-100-10	1	44	Contact Arm	CN70-340-01	1	76	O-Ring 11.2X1.9	/	1
10	Piston Stop	MCN70-100-05	1	45	O-Ring 46.8X1.6	/	1	77	O-Ring 6.8X1.9	/	1
11	Compression Spring	CN70-100-04	1	46	O-Ring 4.2X1.6	/	1	78	O-Ring 5.8X1.9	/	1
12	O-Ring 41.6X3	/	1	47	Nose	CN70-310-01	1	79	Pilot Valve	CN55-220-05	1
13	Head Valve Piston	CN70-100-02	1	48	Washer 8	/	4	80	O-Ring 8.5X2	/	1
14	O-Ring 56.5X3.1	/	2	49	Screw M8X25	/	4	81	Straight Pin	CN55-220-02	2
15	Cylinder Seal	CN70-200-04	1	50	Straight Pin	CN70-310-18	1	82	Trigger Valve Housing	CN55-220-03	1
17	O-Ring 43X4.9	/	1	51	Roll Pin 3X16	/	1	83	O-Ring 19.8X2.4	/	1
18	Piston	CN70-210-01	1	52	Feed Pawl	CN70-310-03	1	84	O-Ring 2.5X1.4	/	2
19	Driver	CN70-210-02	1	53	Torsion Spring	CN55-310-07	1	85	Compression Spring	CN55-220-07	1
20	Cylinder	CN70-200-03	1	54	Step Pin	CN55-310-14	1	86	Trigger Valve Stem	CN55-220-01	1
21	O-Ring 57X3	/	1	55	O-Ring 9.8X2.4	/	1	87	Trigger Valve Cap	CN55-220-04	1
22	Bottom Support Collar	MCN70-200-06	1	56	Feed Piston	CN70-310-06	1	88	Roll Pin 3X30	/	1
23	O-Ring 67.6X3.7	/	1	57	O-Ring 20.8X2.4	/	1	89	Roll Pin 3X22	/	1
24	O-Ring 55.6X5.7	/	1	58	Feed Piston Stop	CN70-310-10	1	90	Contact Arm	CN55-200-10	1
25	Top Bumper	CN70-310-19B	1	59	Compression Spring	CN70-310-11	1	91	Roll Pin 3X26	/	3
26	Bottom Bumper	CN70-310-19A	1	60	Spring Collar	CN70-310-08	1	92	Step Pin 3X16.7	/	1
27	Body	MCN70-200-01	1	61	Retaining Ring C26	/	1	93	O-Ring 1.2X1.9	/	1
28	Grip	2190-200-07	1	62	Receiver Spring	CN45-320-06	2	94	Contact Lever	CN55-200-09	1
29	O-Ring 51.6X3	/	1	63	Post Retainer	CN70-320-06	1	95	Trigger	F327/9032-230-01	1
30	End Cap	MCN70-200-08	1	64	Magazine	CN70-320-01	1	96	Screw M5X6	/	1
33	Air Plug	/	1	65	Magazine Post	CN70-320-07	1	97	Cylinder Cap Unit	MCN70-100-00	1
34	Door Latch	CN70-310-04	1	66	Step Pin	CN70-320-03	1	98	Piston Unit	CN70-200-00	1
35	Compression Spring	CN55-310-15	1	67	Nail Support Unit	CN70-320-05	1	99	Trigger Valve Assembly	CN55-220-00	1
36	Rubber Washer 7	/	3	68	Tension Spring	CN55-320-09	1	100	Nose Assembly	CN70-310-00	1
37	Roll Pin 3X12	/	1	69	Magazine Cover	CN70-320-02	1	101	Magazine Assembly	CN70-320-00	1
38	Door	CN70-310-02	1	70	Elastic Stop Nut M6	/	2				