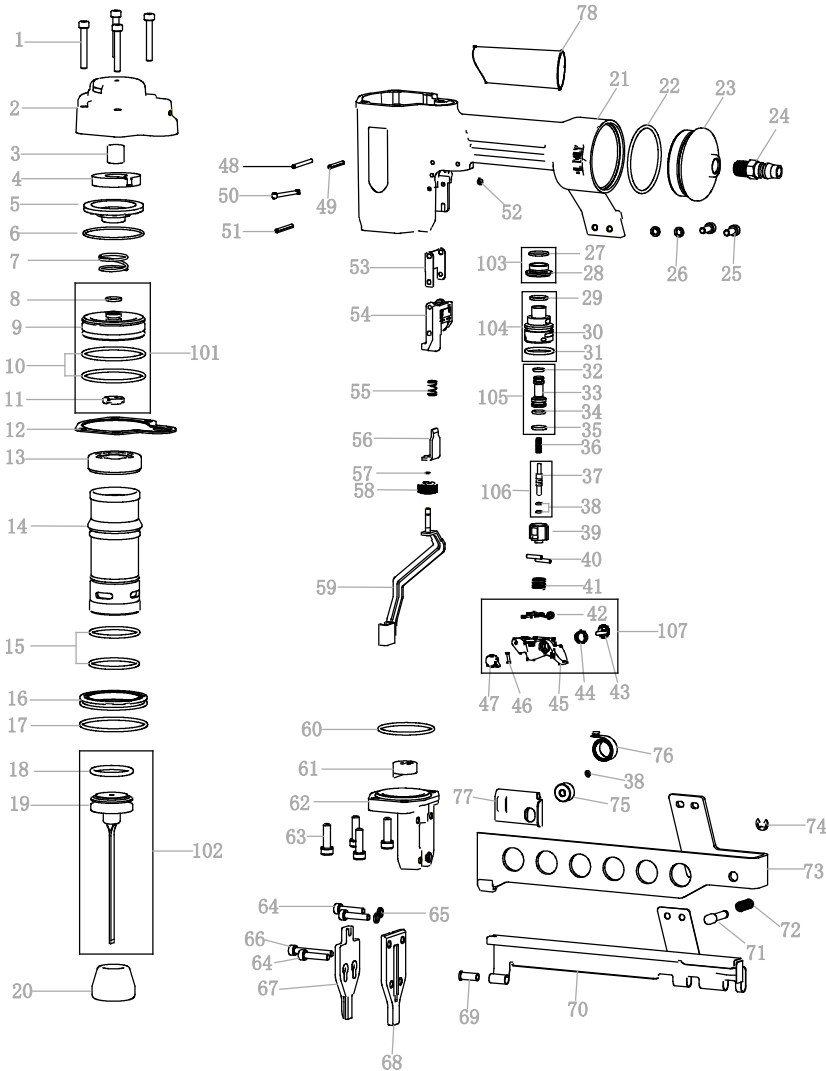


# SERIES EXPLODED VIEWS OF NAILER

## MT440KLM



TEM NO.	PART NO.	PART NAME	Q' TY	TEM NO.	PART NO.	PART NAME	Q' TY
1	B01-01-050350-02	SCREW	4	44	AA16F-032A	SPRING	1
2	AA16F-Y09A1	CYLINDER CAP	1	45	AA16F-037A	TRIGGER	1
3	AA16F-011A	AIRPROOF CUSHION	1	46	B02-020080-02	ROLL PIN	1
4	AA16F-038A	MUFFLER	1	47	AA16F-034A	RNOB	1
5	AA16F-010A	WASHER	1	48	B02-030320-02	ROLL PIN	1
▲6	B08-047500180	O-RING	1	49	B02-030240-02	ROLL PIN	1
▲7	AA16F-026A	SPRING	1	50	AA16F-045A	TRIGGER PIN	1
▲8	B08-009800190	O-RING	1	51	B02-030280-02	ROLL PIN	1
9	AA16F-008A	ACTIVE VALVE	1	52	AA12C-006A	RUBBER JACKER	1
▲10	B08-048900262 -02	O-RING	2	53	AA16F-009A	ARM GUIDE	1
11	AA06A-006A	ACTIVE VALVE SHIM	1	54	AA16F-040A	SAFETY GUIDE	1
12	AA16F-016A	CYLINDER CAP SHIM	1	55	AA16F-039A	SPRING	1
13	AA70A-011A	CYLINDER SEAL	1	56	AA16F-014A	SAFETY	1
14	AA16F-005A	CYLINDER	1	57	AA12C-041A	SNAP RING	1
▲15	B08-037700262	O-RING	2	58	AA16F-042A	ADJUST DIAL	1
16	AA70A-012A	RETAINER RING	1	59	AA16F-Y02A1	SAFETY SOLDER	1
▲17	B08-052070262	O-RING	1	60	B08-042000250	O-RING	1
▲18	B08-029700350	O-RING	1	61	AA16F-030A	GAG	1
▲19	AA16F-Y04A1	DRIVER	1	62	AA16F-004A	MUZZLE BASE	1
20	AA16F-025A	BUMPER	1	63	B01-01-060200-02-NL	SCREW	4
21	AA16F-Y17A1	BODY CAP	1	64	B01-01-050220-02	SCREW	3
▲22	B08-051000250	O-RING	1	65	B04-01-050-02	SPRING WASHER	2
23	AA16F-002A	TAIL CAP	1	66	B01-01-050350-02	SCREW	1
24	AA06A-018A	AIR HOSE CONNECTOR	1	67	AA16F-022A	MUZZLE COVER	1
25	B01-01-050120-02	SCREW	2	68	AA16F-024A	MUZZLE	1
26	B04-01-050-02	SPRING WASHER	2	69	AA16F-029A	BUSHING	1
▲27	B08-010000150	O-RING	1	70	AA16F-020A	STRIP	1
28	AA70A-062A	VALVE	1	71	AA16F-012A	PIN	1
▲29	B08-011800180	O-RING	1	72	AA16F-027A	SPRING	1
30	AA42A-042A	VALVE	1	73	AA16F-Y01A1	NAIL ORIENT SOLDER	1
▲31	B08-019600240	O-RING	1	74	B03-01-0050-04	E-RING	1
▲32	B08-005800190-10	O-RING	1	75	AA16F-043A	POISE SHIM	1
33	AA17D-006A	VALVE PISTON	1	▲76	AA16F-Y13A1	WINDING SPRING	1
▲34	B08-005800190	O-RING	1	77	AA16F-Y12A1	PUSHER SOLDER	1
▲35	B08-008800190	O-RING	1	78	GG08A	SHEATH	1
36	AA40A-062A	SPRING	1				
37	AA16F-044A	THIMBLE	1	101	AA16F-Y06A1	ACTIVE VALVE SET	
▲38	B08-002500140-02	O-RING	3	102	AA16F-Y05A1	DRIVER SET	
39	AA42A-041A	THIMBLE COVER	1	103	AA70A-Y20A1	VALVE SET	
40	AA42A-043A	TRIGGER PIN	2	104	AA42A-Y14A1	VALVE SET	
41	AA16F-033A	SPRING	1	105	AA17D-Y05A1	VALVE PISTON SET	
42	AA16F-006A	TRIGGER	1	106	AA16F-Y15A1	THIMBLE SET	
43	AA16F-035A	RNOB	1	107	AA16F-Y11A1	TRIGGER SET	

Remark: Items with "▲" are vulnerable parts

GBA16F00301  
A2