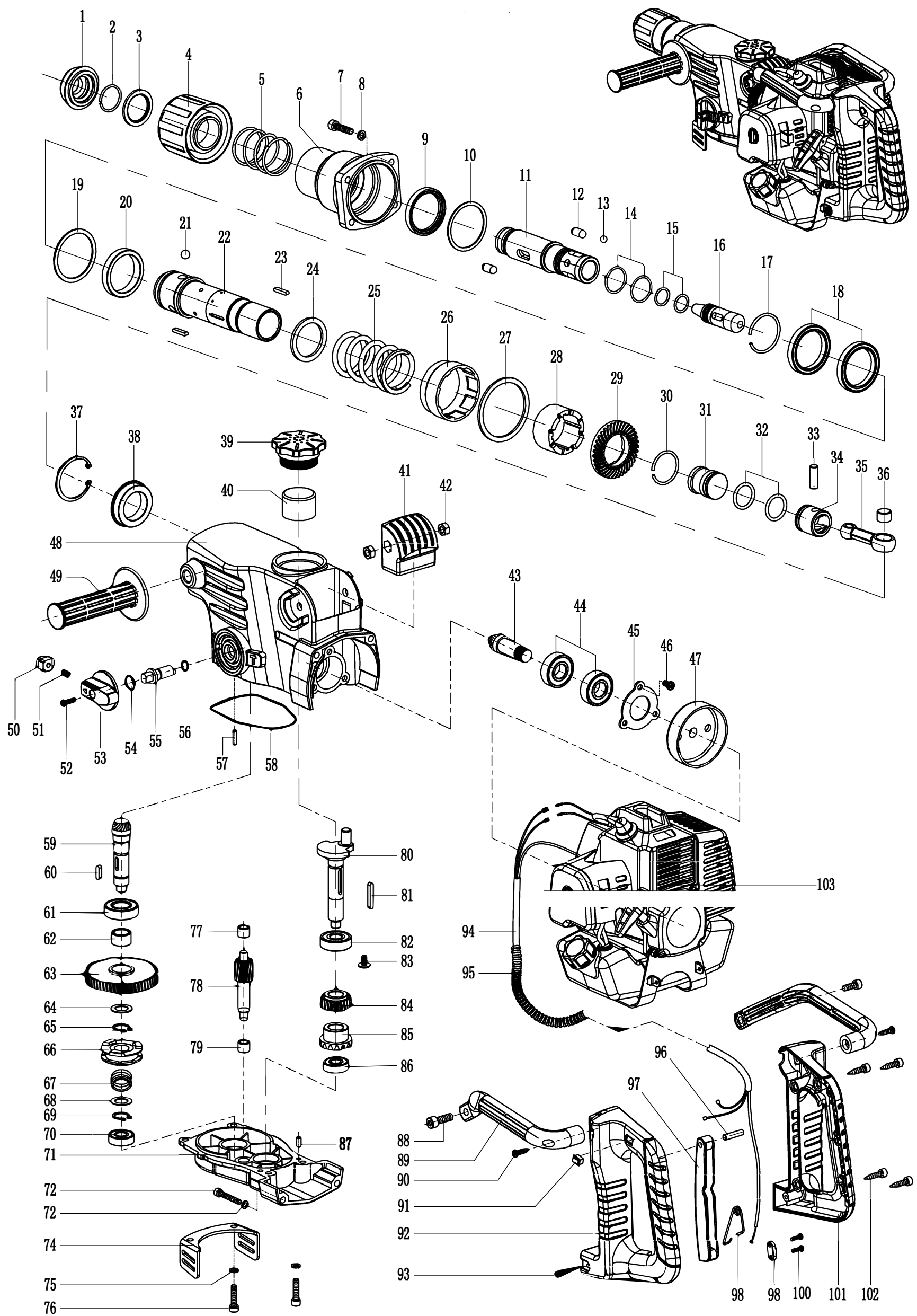


Деталировка FROSP M 58



Лист запасных частей FROSP M 58

No.	Item	Qty.	No.	Item	Qty.	No.	Item	Qty.
1	front cover	1	41	plastic handle connecting attachment	1	81	5X5X28 square key	1
2	steel wire jump ring 28x2	1	42	M8 nut	2	82	6002 bearing	1
3	retaining ring	1	43	No.1 cone-shape gear	1	83	M5X12 flat head screw	3
4	steel ball bracket	1	44	6202 bearing	3	84	small gear	1
5	spring	1	45	bearing cover	1	85	corn-shape gear	1
6	front cylinder sleeve	1	46	5X14 inner hex. screw	1	86	6000 bearing	1
7	M5X25 inner hex. screw	4	47	passive power transfer disk	1	87	5X12 position pin	2
8	φ 5 spring washer	4	48	speed reduction gearbox	1	88	8X30 inner hex. screw	2
9	grease seal 40X50X7	1	49	auxiliary handle	1	89	handle bracket	1
10	gasket	1	50	Function part	1	90	6X16 tapping screw	4
11	teleflex	1	51	spring	1	91	Stop Switch	1
12	cylindrical pin 8X10	2	52	M4X14 screw	1	92	Left handle	1
13	φ 7.94 steel ball	3	53	2 function knob	2	93	5X14 tapping screw	1
14	seal ring 28X2	2	54	φ 17 jump ring	2	94	power wire	1
15	seal ring 19X2	2	55	2 function knob locking parts	1	95	protective sheath	1
16	shock sub	1	56	Seal ring 11X1	1	96	6X20 cylindrical pin	1
17	jump ring 40X2.5	1	57	M5X18 headless screw	1	97	switch button	1
18	6808 bearing	2	58	Seal ring	1	98	Coil spring	1
19	gasket	1	59	NO.2 cone shape gear	1	99	pressing board	1
20	cylinder liner	1	60	4X4X14 square key	1	100	4X14 tapping screw	1
21	φ 9 steel ball	3	61	16003 bearing	1	101	right handle	2
22	cylinder	1	62	Needle bearing	1	102	6X22 tapping screw	1
23	square key 3X3X18	2	63	big gear	1	103	gasoline engine assembly	2
24	gasket	1	64	gasket	1	104		1
25	spring	1	65	φ 15 jump ring	1	105		
26	range ring	1	66	clutch	1	106		
27	gasket	1	67	Tower-shape spring	1	107		
28	clutch	1	68	gasket	1	108		
29	gear	1	69	φ 15 jump ring	1	109		
30	jump ring 34X2.5	1	70	6000 bearing	1	110		
31	ram	1	71	top cover	4			

32	O ring	1	72	6X45 inner hex. screw	4			
33	piston pin	1	73	φ 6 spring washer	1			
34	piston	1	74	supported bracket	1			
35	connecting rod	1	75	φ 6 spring washer	1			
36	Needle bearing HK101612	1	76	6X20 inner hex. screw	1			
37	Φ 56jump ring	1	77	Needle bearing HK0810	1			
38	The cylinder liner	1	78	shaft for samll gear	1			
39	oil seal cover	1	79	Needle bearing HK0810	1			
40	leakproof plastic ring	2	80	eccentric shaft				