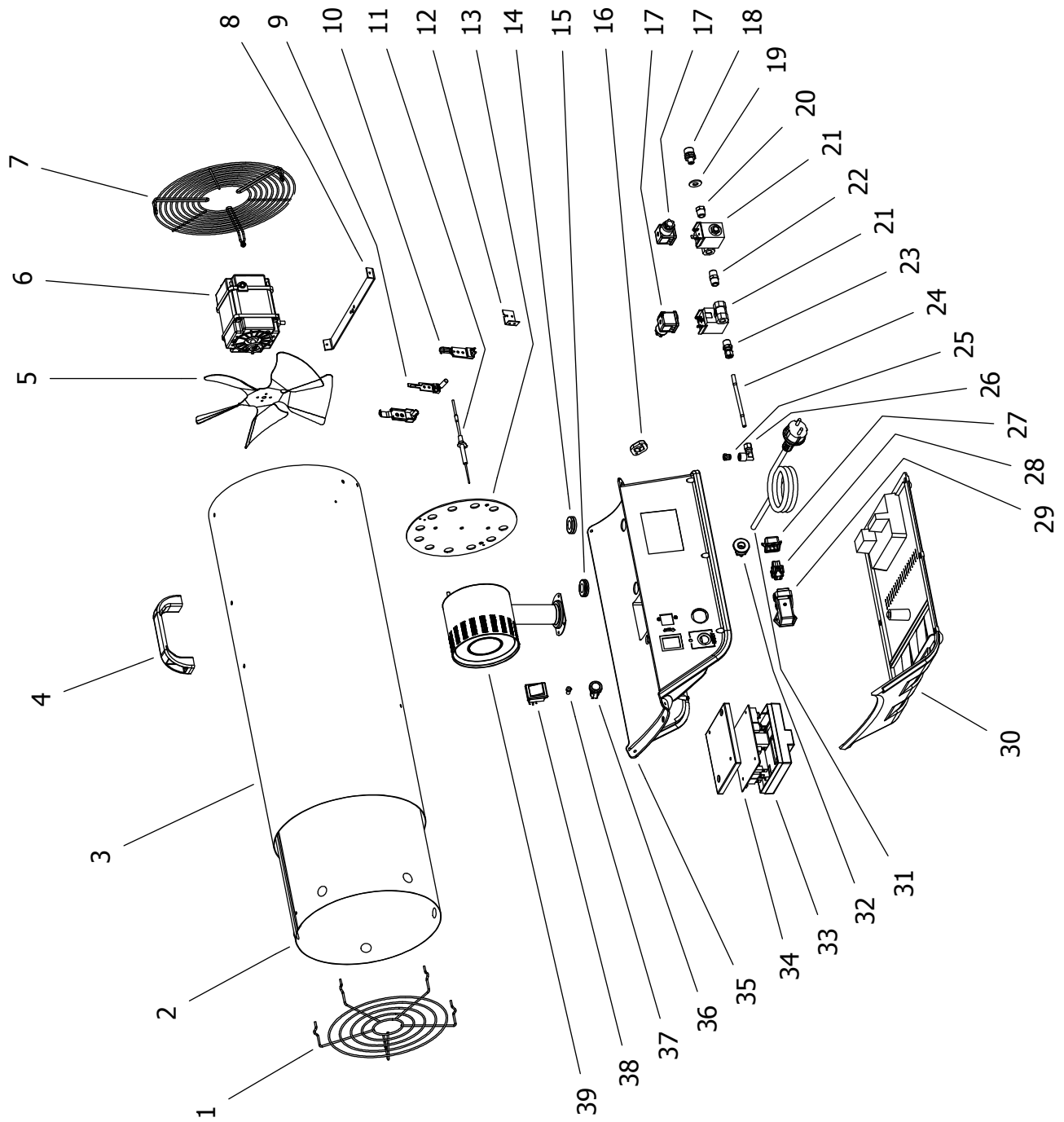


# BLP 73 E MODEL 2012

UNIT 1

ILLUSTRATED PARTS BREAKDOWN

Edizione 2012  
Rev. A



<b>Pos.</b>	<b>Code NR</b>	<b>Description</b>
1	4160.740	OUTLET GRID
2	4162.749	COMBUSTION CHAMBER
3	4162.746	COVER
4	4162.893	PLASTIC HANDLE
5	4162.745	FAN
6	(*)	MOTOR
7	4160.739	INLET GRID
8	4162.733	MOTOR BRACKET
9	4160.080	AIR PROBE
10	4160.281	COVER AIR PROBE
11	4160.237	IGNITION ELECTRICAL FOLDER
12	4162.794	AIR PROBE BRACKET
13	4162.870	BURNER PLATE
14	4160.646	GROMMET
15	4160.646	GROMMET
16	4161.854	BLOCK FOR NOZZLE
17	4160.020	ELECTROVALVE CABLE
18	4160.048	GAS INLET NOZZLE
19	4160.283	WASHER
20	4160.964	REDUCTION NIPPLES
21	4160.963	ELECTROVALVE
22	4161.095	NIPPLES
23	4160.962	REDUCTION NIPPLES
24	4162.724	COPPER TUBE
25	4160.770	GAS NOZZLE
26	4160.967	ELBOW
27	4162.467	CAP FOR THERMOSTAT SOCKET
28	4161.400	CONNEXION SOCKET
29	4160.647	ANGULAR FIX CASE
30	4162.853	LOWER PLASTIC BASE
31	4160.539	POWER CORD
32	4160.635	KEEPER WIRE
33	4160.346	PC BOARD COVER
34	4162.718	ELECTRONIC PC BOARD
35	4162.854	UPPER PLASTIC BASE
36	4160.430	RESET SWITCH
37	4162.790	LED
38	4160.637	SWITCH
39	4160.467	GAS BURNER
(*)	4160.958	MOTOR
	4110.293	CAPACITOR 5 $\mu$ F
	4160.047	MOTOR
	4110.294	CAPACITOR 8 $\mu$ F