

1

Plunger - Spring	3/2	Ordering code T228.1.0.1	5/2	Plunger - Spring			
		<table border="1" style="width: 100%; border-collapse: collapse;"> <tr><td>T TYPE</td></tr> <tr><td>32 = 3 ways</td></tr> <tr><td>52 = 5 ways</td></tr> </table>	T TYPE	32 = 3 ways	52 = 5 ways		
T TYPE							
32 = 3 ways							
52 = 5 ways							
Weight gr. 60 Operating force 33 N				Weight gr. 72 Operating force 33 N			
Operational characteristic	Fluid	Max working pressure (bar)	Temperature °C	Flow rate at 6 bar with Δp=1 (Nl/min)	Orifice size (mm)	Working ports size	
	Filtered and lubricated air	10 bar	Min. -5°C Max. +50°C	620 Nl/min	mm 6	G 1/8"	

Plunger - Spring	3/2	Ordering code T228.1.1.1	5/2	Plunger - Spring			
<i>for panel mounting</i>		<i>for panel mounting</i>		<i>for panel mounting</i>			
		<table border="1" style="width: 100%; border-collapse: collapse;"> <tr><td>T TYPE</td></tr> <tr><td>32 = 3 ways</td></tr> <tr><td>52 = 5 ways</td></tr> </table>	T TYPE	32 = 3 ways	52 = 5 ways		
T TYPE							
32 = 3 ways							
52 = 5 ways							
Weight gr. 77 Operating force 33 N				Weight gr. 90 Operating force 33 N			
Operational characteristic	Fluid	Max working pressure (bar)	Temperature °C	Flow rate at 6 bar with Δp=1 (Nl/min)	Orifice size (mm)	Working ports size	
	Filtered and lubricated air	10 bar	Min. -5°C Max. +50°C	620 Nl/min	mm 6	G 1/8"	

Roller lever - Spring	3/2	Ordering code T228.1.2.V	5/2	Roller lever - Spring						
		<table border="1" style="width: 100%; border-collapse: collapse;"> <tr><td>T TYPE</td></tr> <tr><td>32 = 3 ways</td></tr> <tr><td>52 = 5 ways</td></tr> <tr><td>V VERSION</td></tr> <tr><td>1 = Plastic roller</td></tr> <tr><td>1/2 = Ball bearing</td></tr> </table>	T TYPE	32 = 3 ways	52 = 5 ways	V VERSION	1 = Plastic roller	1/2 = Ball bearing		
T TYPE										
32 = 3 ways										
52 = 5 ways										
V VERSION										
1 = Plastic roller										
1/2 = Ball bearing										
Weight gr. 90 Operating force 15 N				Weight gr. 102 Operating force 15 N						
Operational characteristic	Fluid	Max working pressure (bar)	Temperature °C	Flow rate at 6 bar with Δp=1 (Nl/min)	Orifice size (mm)	Working ports size				
	Filtered and lubricated air	10 bar	Min. -5°C Max. +50°C	620 Nl/min	mm 6	G 1/8"				

Roller lever (ball bearings) - Spring	3/2	Ordering code T228. T.2.1/1	5/2	Roller lever (ball bearings) - Spring			
		<table border="1" style="width:100%; border-collapse: collapse;"> <tr><td>TYPE</td></tr> <tr><td>T 32 = 3 ways</td></tr> <tr><td>52 = 5 ways</td></tr> </table>	TYPE	T 32 = 3 ways	52 = 5 ways		
TYPE							
T 32 = 3 ways							
52 = 5 ways							
<p>Weight gr. 105 Operating force 15 N</p>				<p>Weight gr. 117 Operating force 15 N</p>			
Operational characteristic	Fluid	Max working pressure (bar)	Temperature °C	Flow rate at 6 bar with Δp=1 (Nl/min)	Orifice size (mm)	Working ports size	
	Filtered and lubricated air	10 bar	Min. -5°C Max. +50°C	620 Nl/min	mm 6	G 1/8"	

Button lever - Spring	3/2	Ordering code T228. T.2.6/C	5/2	Button lever - Spring							
		<table border="1" style="width:100%; border-collapse: collapse;"> <tr><td>TYPE</td></tr> <tr><td>T 32 = 3 ways</td></tr> <tr><td>52 = 5 ways</td></tr> <tr><td>BUTTON COLOR</td></tr> <tr><td>C 1 = Red</td></tr> <tr><td>2 = Black</td></tr> <tr><td>3 = Green</td></tr> </table>	TYPE	T 32 = 3 ways	52 = 5 ways	BUTTON COLOR	C 1 = Red	2 = Black	3 = Green		
TYPE											
T 32 = 3 ways											
52 = 5 ways											
BUTTON COLOR											
C 1 = Red											
2 = Black											
3 = Green											
<p>Weight gr. 95 Operating force 15 N</p>				<p>Weight gr. 87 Operating force 15 N</p>							
Operational characteristic	Fluid	Max working pressure (bar)	Temperature °C	Flow rate at 6 bar with Δp=1 (Nl/min)	Orifice size (mm)	Working ports size					
	Filtered and lubricated air	10 bar	Min. -5°C Max. +50°C	620 Nl/min	mm 6	G 1/8"					

One way Roller lever - Spring	3/2	Ordering code T228. T.3.V	5/2	One way Roller lever - Spring						
		<table border="1" style="width:100%; border-collapse: collapse;"> <tr><td>TYPE</td></tr> <tr><td>T 32 = 3 ways</td></tr> <tr><td>52 = 5 ways</td></tr> <tr><td>VERSION</td></tr> <tr><td>V 1 = Plastic roller</td></tr> <tr><td>1/2 = Ball bearing</td></tr> </table>	TYPE	T 32 = 3 ways	52 = 5 ways	VERSION	V 1 = Plastic roller	1/2 = Ball bearing		
TYPE										
T 32 = 3 ways										
52 = 5 ways										
VERSION										
V 1 = Plastic roller										
1/2 = Ball bearing										
<p>Weight gr. 85</p>				<p>Weight gr. 97</p>						
Operational characteristic	Fluid	Max working pressure (bar)	Temperature °C	Flow rate at 6 bar with Δp=1 (Nl/min)	Orifice size (mm)	Working ports size				
	Filtered and lubricated air	10 bar	Min. -5°C Max. +50°C	620 Nl/min	mm 6	G 1/8"				

1

Toggle Lever (for panel mounting) Ø 30 2 positions	3/2	Ordering code T228.1.5/C	5/2	Toggle Lever (for panel mounting) Ø 30 2 positions
		<p>TYPE</p> <p>T 32 = 3 ways 52 = 5 ways</p> <p>BUTTON COLOR</p> <p>C 1 = Red 2 = Black 3 = Green</p>		
Weight gr. 168				Weight gr. 180

Operational characteristic	Fluid	Max working pressure (bar)	Temperature °C		Flow rate at 6 bar with Δp=1 (Nl/min)	Orifice size (mm)	Working ports size
	Filtered and lubricated air	10 bar	Min. -5°C	Max. +50°C	620 Nl/min	mm 6	G 1/8"

Toggle Lever - 2 positions 2 positions	3/2	Ordering code T228.1.55/C	5/2	Toggle Lever - 2 positions 2 positions
		<p>TYPE</p> <p>T 32 = 3 ways 52 = 5 ways</p> <p>BUTTON COLOR</p> <p>C 1 = Red 2 = Black 3 = Green</p>		
Weight gr. 84				Weight gr. 96

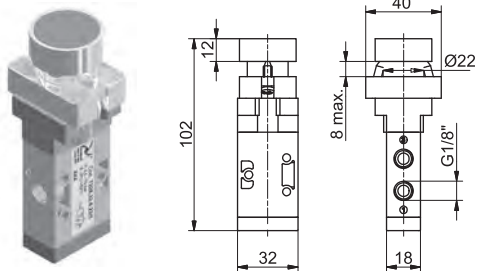
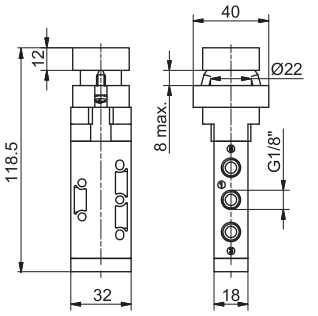
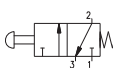

Operational characteristic	Fluid	Max working pressure (bar)	Temperature °C		Flow rate at 6 bar with Δp=1 (Nl/min)	Orifice size (mm)	Working ports size
	Filtered and lubricated air	10 bar	Min. -5°C	Max. +50°C	620 Nl/min	mm 6	G 1/8"

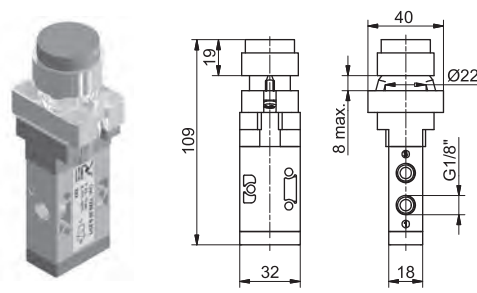
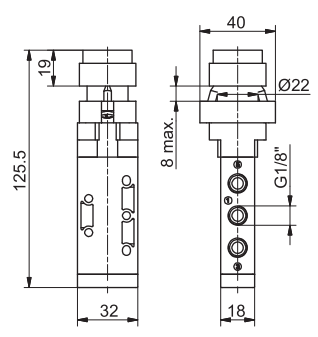
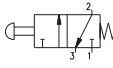
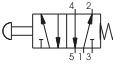
Push button Ø 30 - spring 2 positions	3/2	Ordering code T228.1.6.1/C	5/2	Push button Ø 30 - spring 2 positions
		<p>TYPE</p> <p>T 32 = 3 ways 52 = 5 ways</p> <p>BUTTON COLOR</p> <p>C 1 = Red 2 = Black 3 = Green</p>		
Weight gr. 125 Operating force 33 N				Weight gr. 137 Operating force 33 N

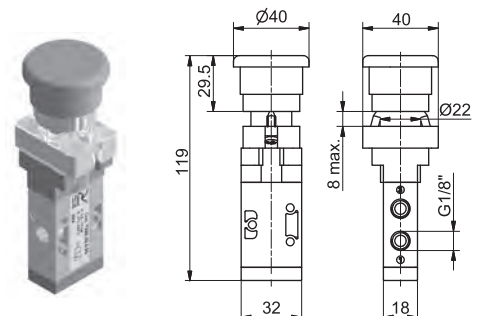
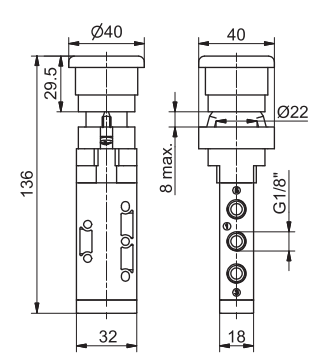
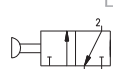
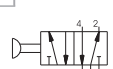
Operational characteristic	Fluid	Max working pressure (bar)	Temperature °C		Flow rate at 6 bar with Δp=1 (Nl/min)	Orifice size (mm)	Working ports size
	Filtered and lubricated air	10 bar	Min. -5°C	Max. +50°C	620 Nl/min	mm 6	G 1/8"



1

Push button - spring	3/2	Ordering code	5/2	Push button - spring		
		T228.1.6.22/C				
		TYPE 32 = 3 ways 52 = 5 ways BUTTON COLOR 1 = Red 2 = Black 3 = Green 4 = Yellow				
Weight gr. 200 Operating force 33N				Weight gr. 212 Operating force 33N		
Operational characteristic	Fluid	Max working pressure (bar)	Temperature °C	Flow rate at 6 bar with Δp=1 (Nl/min)	Orifice size (mm)	Working ports size
	Filtered and lubricated air	10 bar	Min. -5°C Max. +50°C	620 Nl/min	mm 6	G 1/8"

Raised Push button - spring	3/2	Ordering code	5/2	Raised Push button - spring		
		T228.1.6.23/C				
		TYPE 32 = 3 ways 52 = 5 ways BUTTON COLOR 1 = Red 2 = Black 3 = Green 4 = Yellow				
Weight gr. 205 Operating force 33N				Weight gr. 217 Operating force 33N		
Operational characteristic	Fluid	Max working pressure (bar)	Temperature °C	Flow rate at 6 bar with Δp=1 (Nl/min)	Orifice size (mm)	Working ports size
	Filtered and lubricated air	10 bar	Min. -5°C Max. +50°C	620 Nl/min	mm 6	G 1/8"

Palm button - 2 positions	3/2	Ordering code	5/2	Palm button - 2 positions		
<i>emergency - Rotate to unlock</i>		T228.1.6.25	<i>emergency - Rotate to unlock</i>			
		TYPE 32 = 3 ways 52 = 5 ways				
Weight gr. 210 Operating force 33N				Weight gr. 202 Operating force 33N		
Operational characteristic	Fluid	Max working pressure (bar)	Temperature °C	Flow rate at 6 bar with Δp=1 (Nl/min)	Orifice size (mm)	Working ports size
	Filtered and lubricated air	10 bar	Min. -5°C Max. +50°C	620 Nl/min	mm 6	G 1/8"

1

Switch - 2 positions	3/2	Ordering code T228.1.6.27	5/2	Switch - 2 positions				
		<table border="1" style="width:100%; border-collapse: collapse;"> <tr> <td style="text-align: center;">TYPE</td> </tr> <tr> <td>32 = 3 ways</td> </tr> <tr> <td>52 = 5 ways</td> </tr> </table>		TYPE	32 = 3 ways	52 = 5 ways		
				TYPE				
32 = 3 ways								
52 = 5 ways								
<table border="1" style="width:100%; border-collapse: collapse;"> <tr> <td style="text-align: center;">Min. -5°C</td> <td style="text-align: center;">Max. +50°C</td> </tr> </table>		Min. -5°C	Max. +50°C					
Min. -5°C	Max. +50°C							
<p>Weight gr. 205 Operating force 33N</p>				<p>Weight gr. 217 Operating force 33N</p>				
Operational characteristic		Fluid	Max working pressure (bar)	Temperature °C	Flow rate at 6 bar with Δp=1 (Nl/min)	Orifice size (mm)	Working ports size	
		Filtered and lubricated air	10 bar	Min. -5°C Max. +50°C	620 Nl/min	mm 6	G 1/8"	

Key switch - 2 positions	3/2	Ordering code T228.1.6.28	5/2	Key switch - 2 positions				
		<table border="1" style="width:100%; border-collapse: collapse;"> <tr> <td style="text-align: center;">TYPE</td> </tr> <tr> <td>32 = 3 ways</td> </tr> <tr> <td>52 = 5 ways</td> </tr> </table>		TYPE	32 = 3 ways	52 = 5 ways		
				TYPE				
32 = 3 ways								
52 = 5 ways								
<table border="1" style="width:100%; border-collapse: collapse;"> <tr> <td style="text-align: center;">Min. -5°C</td> <td style="text-align: center;">Max. +50°C</td> </tr> </table>		Min. -5°C	Max. +50°C					
Min. -5°C	Max. +50°C							
<p>Weight gr. 205 Operating force 33N</p>				<p>Weight gr. 217 Operating force 33N</p>				
Operational characteristic		Fluid	Max working pressure (bar)	Temperature °C	Flow rate at 6 bar with Δp=1 (Nl/min)	Orifice size (mm)	Working ports size	
		Filtered and lubricated air	10 bar	Min. -5°C Max. +50°C	620 Nl/min	mm 6	G 1/8"	

Palm Push button Ø 30	3/2	Ordering code T228.1.7.1/C	5/2	Palm Push button Ø 30				
		<table border="1" style="width:100%; border-collapse: collapse;"> <tr> <td style="text-align: center;">TYPE</td> </tr> <tr> <td>32 = 3 ways</td> </tr> <tr> <td>52 = 5 ways</td> </tr> </table>		TYPE	32 = 3 ways	52 = 5 ways		
				TYPE				
32 = 3 ways								
52 = 5 ways								
<table border="1" style="width:100%; border-collapse: collapse;"> <tr> <td style="text-align: center;">BUTTON COLOR</td> </tr> <tr> <td>1 = Red</td> </tr> <tr> <td>2 = Black</td> </tr> <tr> <td>3 = Green</td> </tr> </table>		BUTTON COLOR	1 = Red	2 = Black	3 = Green			
BUTTON COLOR								
1 = Red								
2 = Black								
3 = Green								
<p>Weight gr. 118 Operating force 33N</p>				<p>Weight gr. 130 Operating force 33N</p>				
Operational characteristic		Fluid	Max working pressure (bar)	Temperature °C	Flow rate at 6 bar with Δp=1 (Nl/min)	Orifice size (mm)	Working ports size	
		Filtered and lubricated air	10 bar	Min. -5°C Max. +50°C	620 Nl/min	mm 6	G 1/8"	

Push button - Spring	3/2	Ordering code T228.1.8.1/C	5/2	Push button - Spring				
		<table border="1" style="width: 100%; border-collapse: collapse;"> <tr><td>TYPE</td></tr> <tr><td>T 32 = 3 ways 52 = 5 ways</td></tr> <tr><td>BUTTON COLOR</td></tr> <tr><td>C 1 = Red 2 = Black 3 = Green</td></tr> </table>	TYPE	T 32 = 3 ways 52 = 5 ways	BUTTON COLOR	C 1 = Red 2 = Black 3 = Green		
TYPE								
T 32 = 3 ways 52 = 5 ways								
BUTTON COLOR								
C 1 = Red 2 = Black 3 = Green								
Weight gr. 95 Operating force 33N				Weight gr. 107 Operating force 33N				
Operational characteristic	Fluid	Max working pressure (bar)	Temperature °C	Flow rate at 6 bar with Δp=1 (Nl/min)	Orifice size (mm)	Working ports size		
	Filtered and lubricated air	10 bar	Min. -5°C Max. +50°C	620 Nl/min	mm 6	G 1/8"		

Push button - 2 positions	3/2	Ordering code T228.1.8/C	5/2	Push button - 2 positions				
		<table border="1" style="width: 100%; border-collapse: collapse;"> <tr><td>TYPE</td></tr> <tr><td>T 32 = 3 ways 52 = 5 ways</td></tr> <tr><td>BUTTON COLOR</td></tr> <tr><td>C 1 = Red 2 = Black 3 = Green</td></tr> </table>	TYPE	T 32 = 3 ways 52 = 5 ways	BUTTON COLOR	C 1 = Red 2 = Black 3 = Green		
TYPE								
T 32 = 3 ways 52 = 5 ways								
BUTTON COLOR								
C 1 = Red 2 = Black 3 = Green								
Weight gr. 95 Operating force 10N				Weight gr. 107 Operating force 10N				
Operational characteristic	Fluid	Max working pressure (bar)	Temperature °C	Flow rate at 6 bar with Δp=1 (Nl/min)	Orifice size (mm)	Working ports size		
	Filtered and lubricated air	10 bar	Min. -5°C Max. +50°C	620 Nl/min	mm 6	G 1/8"		

Lever lateral - Spring	3/2	Ordering code T228.1.9.1/C	5/2	Lever lateral - Spring				
		<table border="1" style="width: 100%; border-collapse: collapse;"> <tr><td>TYPE</td></tr> <tr><td>T 32 = 3 ways 52 = 5 ways</td></tr> <tr><td>BUTTON COLOR</td></tr> <tr><td>C 1 = Red 2 = Black 3 = Green</td></tr> </table>	TYPE	T 32 = 3 ways 52 = 5 ways	BUTTON COLOR	C 1 = Red 2 = Black 3 = Green		
TYPE								
T 32 = 3 ways 52 = 5 ways								
BUTTON COLOR								
C 1 = Red 2 = Black 3 = Green								
Weight gr. 100				Weight gr. 110				
Operational characteristic	Fluid	Max working pressure (bar)	Temperature °C	Flow rate at 6 bar with Δp=1 (Nl/min)	Orifice size (mm)	Working ports size		
	Filtered and lubricated air	10 bar	Min. -5°C Max. +50°C	620 Nl/min	mm 6	G 1/8"		

1

Lateral lever - 2 positions

3/2

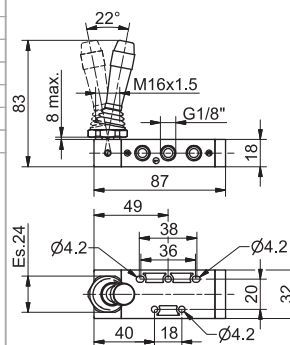
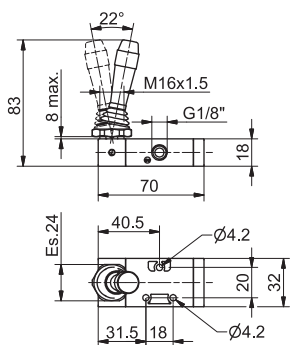
Ordering code

T228.1.9/C

- T** TYPE
32 = 3 ways
52 = 5 ways
- C** BUTTON COLOR
1 = Red
2 = Black
3 = Green

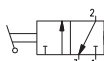
5/2

Lateral lever - 2 positions



Weight gr. 100

Weight gr. 110



Operational characteristic	Fluid	Max working pressure (bar)	Temperature °C		Flow rate at 6 bar with Δp=1 (Nl/min)	Orifice size (mm)	Working ports size
		Filtered and lubricated air	10 bar	Min. -5°C	Max. +50°C	620 Nl/min	mm 6

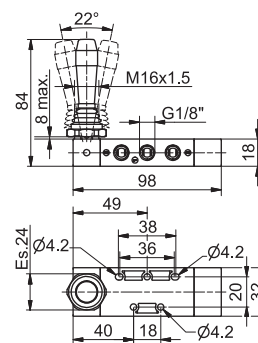
Lateral Lever spring - 3 positions

5/3

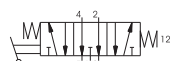
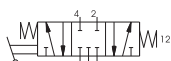
Ordering code

T228.53.F.9.1/C

- F** FUNCTION
31 = Closed Centres
32 = Open Centres
- C** BUTTON COLOR
1 = Red
2 = Black
3 = Green



Weight gr. 140



Operational characteristic	Fluid	Max working pressure (bar)	Temperature °C		Flow rate at 6 bar with Δp=1 (Nl/min)	Orifice size (mm)	Working ports size
		Filtered and lubricated air	10 bar	Min. -5°C	Max. +50°C	410 Nl/min	mm 6

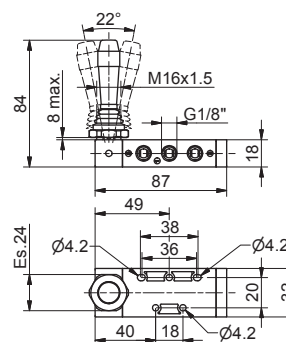
Lateral lever - 3 positions detent

5/3

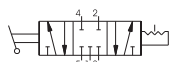
Ordering code

T228.53.F.9/C

- F** FUNCTION
31 = Closed Centres
32 = Open Centres
- C** BUTTON COLOR
1 = Red
2 = Black
3 = Green



Weight gr. 110



Operational characteristic	Fluid	Max working pressure (bar)	Temperature °C		Flow rate at 6 bar with Δp=1 (Nl/min)	Orifice size (mm)	Working ports size
		Filtered and lubricated air	10 bar	Min. -5°C	Max. +50°C	410 Nl/min	mm 6